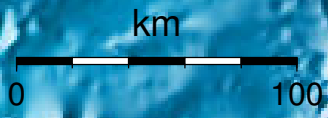


EPICENTER AND MAGNITUDE

Epicenter

Stations used for calculation: ▲
Origen (UTC): **2012/ 6/11 18:47:59**
Moment Magnitude (Mw)= 4.0
Distance from San José (km)= 181.7
Depth (km)= 68.8 ± 4.0
Longitude= -85.599 ± 0.018
Latitude= 10.551 ± 0.011
Error RMS= 0.058



Laboratorio de Ingeniería Sísmica (INII-UCR)