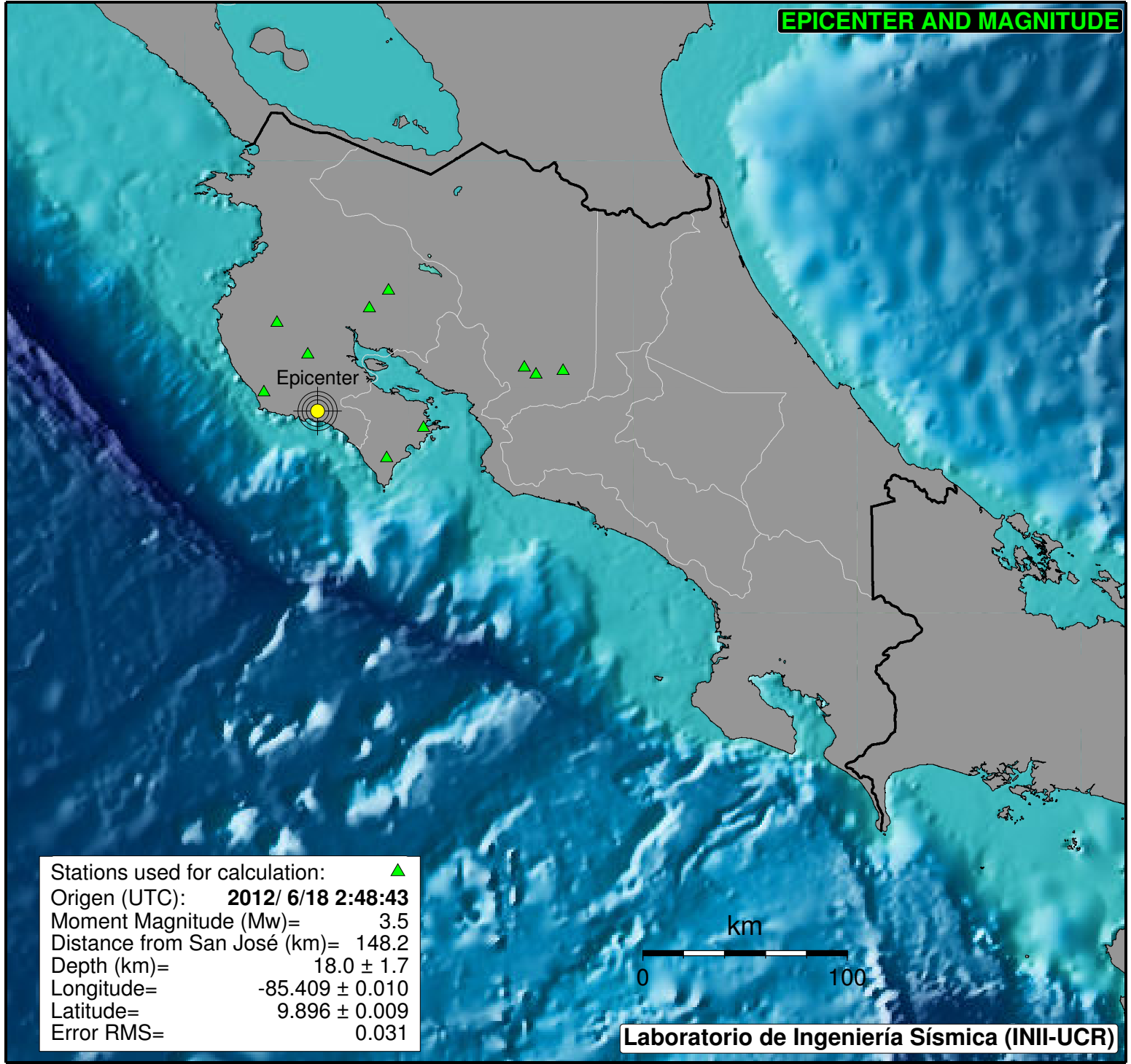
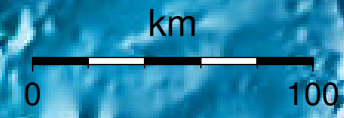


EPICENTER AND MAGNITUDE



Stations used for calculation: ▲
Origen (UTC): **2012/ 6/18 2:48:43**
Moment Magnitude (Mw)= 3.5
Distance from San José (km)= 148.2
Depth (km)= 18.0 ± 1.7
Longitude= -85.409 ± 0.010
Latitude= 9.896 ± 0.009
Error RMS= 0.031



Laboratorio de Ingeniería Sísmica (INII-UCR)