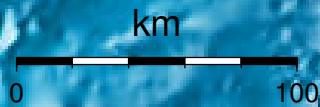


EPICENTER AND MAGNITUDE

Epicenter

Stations used for calculation: ▲
Origen (UTC): **2012/ 9/ 5 15:47:19**
Moment Magnitude (Mw)= 3.5
Distance from San José (km)= 166.6
Depth (km)= 15.0 ± 1.2
Longitude= -85.577 ± 0.005
Latitude= 10.003 ± 0.010
Error RMS= 0.008



Laboratorio de Ingeniería Sísmica (INII-UCR)