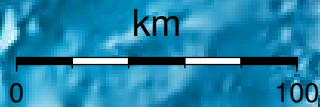


EPICENTER AND MAGNITUDE

Epicenter

Stations used for calculation: ▲
Origen (UTC): **2012/ 9/ 6 9: 7: 8**
Moment Magnitude (Mw)= 5.2
Distance from San José (km)= 163.5
Depth (km)= 15.3 ± 1.3
Longitude= -85.543 ± 0.018
Latitude= 9.793 ± 0.015
Error RMS= 0.056



Laboratorio de Ingeniería Sísmica (INII-UCR)