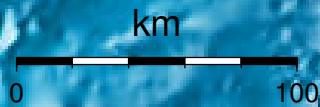


**AUTOMATIC CALCULATION**

Epicenter

Stations used for calculation: ▲  
Origen (UTC): **2012/ 9/ 8 20:29:29**  
Moment Magnitude (Mw)= 5.6  
Distance from San José (km)= 160.0  
Depth (km)=  $16.8 \pm 1.7$   
Longitude=  $-85.516 \pm 0.019$   
Latitude=  $9.862 \pm 0.017$   
Error RMS= 0.085



**Laboratorio de Ingeniería Sísmica (INII-UCR)**