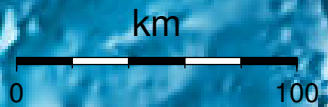


EPICENTER AND MAGNITUDE

Epicenter

Stations used for calculation: ▲
Origen (UTC): **2012/ 9/ 9 17:52:22**
Moment Magnitude (Mw)= 3.5
Distance from San José (km)= 173.4
Depth (km)= 14.0 ± 1.7
Longitude= -85.640 ± 0.015
Latitude= 9.966 ± 0.008
Error RMS= 0.016



Laboratorio de Ingeniería Sísmica (INII-UCR)