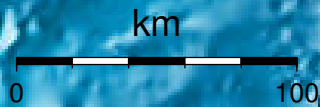


EPICENTER AND MAGNITUDE

Epicenter

Stations used for calculation: ▲
Origen (UTC): **2012/ 9/12 2:13: 0**
Moment Magnitude (Mw)= 4.8
Distance from San José (km)= 173.8
Depth (km)= 16.2 ± 1.4
Longitude= -85.644 ± 0.018
Latitude= 9.944 ± 0.014
Error RMS= 0.063



Laboratorio de Ingeniería Sísmica (INII-UCR)