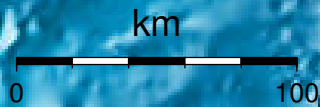


EPICENTER AND MAGNITUDE

Epicenter

Stations used for calculation: ▲
Origen (UTC): **2012/ 9/12 2:18:12**
Moment Magnitude (Mw)= 4.4
Distance from San José (km)= 172.9
Depth (km)= 13.7 ± 2.1
Longitude= -85.636 ± 0.013
Latitude= 9.950 ± 0.009
Error RMS= 0.025



Laboratorio de Ingeniería Sísmica (INII-UCR)