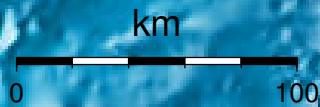


EPICENTER AND MAGNITUDE

Epicenter

Stations used for calculation: ▲
Origen (UTC): **2012/10/ 1 16:43:34**
Moment Magnitude (Mw)= 3.1
Distance from San José (km)= 166.5
Depth (km)= 10.0 ± 4.4
Longitude= -85.576 ± 0.015
Latitude= 10.007 ± 0.016
Error RMS= 0.069



Laboratorio de Ingeniería Sísmica (INII-UCR)