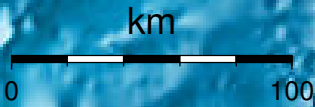


**EPICENTER AND MAGNITUDE**

Epicenter

Stations used for calculation: ▲  
Origen (UTC): **2012/10/10 13:34:46**  
Moment Magnitude (Mw)= 3.4  
Distance from San José (km)= 173.5  
Depth (km)=  $13.0 \pm 2.3$   
Longitude=  $-85.641 \pm 0.019$   
Latitude=  $9.976 \pm 0.012$   
Error RMS= 0.050



**Laboratorio de Ingeniería Sísmica (INII-UCR)**