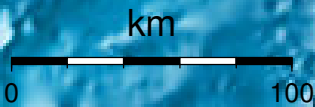


**EPICENTER AND MAGNITUDE**

Epicenter

Stations used for calculation: ▲  
Origen (UTC): **2012/10/21 13:34:25**  
Moment Magnitude (Mw)= 3.5  
Distance from San José (km)= 174.1  
Depth (km)=  $13.6 \pm 2.3$   
Longitude=  $-85.646 \pm 0.018$   
Latitude=  $9.974 \pm 0.012$   
Error RMS= 0.054



**Laboratorio de Ingeniería Sísmica (INII-UCR)**