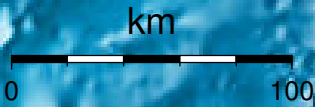


**EPICENTER AND MAGNITUDE**

Epicenter

Stations used for calculation: ▲  
Origen (UTC): **2012/10/24 0:45:32**  
Moment Magnitude (Mw)= 6.3  
Distance from San José (km)= 164.8  
Depth (km)=  $14.7 \pm 1.6$   
Longitude=  $-85.553 \pm 0.014$   
Latitude=  $9.776 \pm 0.015$   
Error RMS= 0.066



**Laboratorio de Ingeniería Sísmica (INII-UCR)**