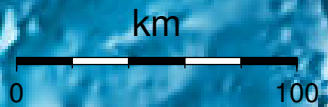


**EPICENTER AND MAGNITUDE**

Epicenter



Stations used for calculation: ▲  
Origen (UTC): **2012/11/22 13:52: 3**  
Moment Magnitude (Mw)= 3.9  
Distance from San José (km)= 175.9  
Depth (km)= 16.8 ± 2.0  
Longitude= -85.663 ± 0.022  
Latitude= 9.954 ± 0.013  
Error RMS= 0.058



**Laboratorio de Ingeniería Sísmica (INII-UCR)**