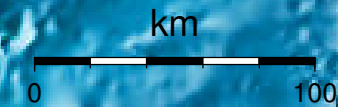


EPICENTER AND MAGNITUDE

Epicenter



Stations used for calculation: ▲
Origen (UTC): **2012/12/29 3:32:12**
Moment Magnitude (Mw)= 3.8
Distance from San José (km)= 176.5
Depth (km)= 20.2 ± 3.0
Longitude= -85.660 ± 0.024
Latitude= 9.771 ± 0.023
Error RMS= 0.046



Laboratorio de Ingeniería Sísmica (INII-UCR)