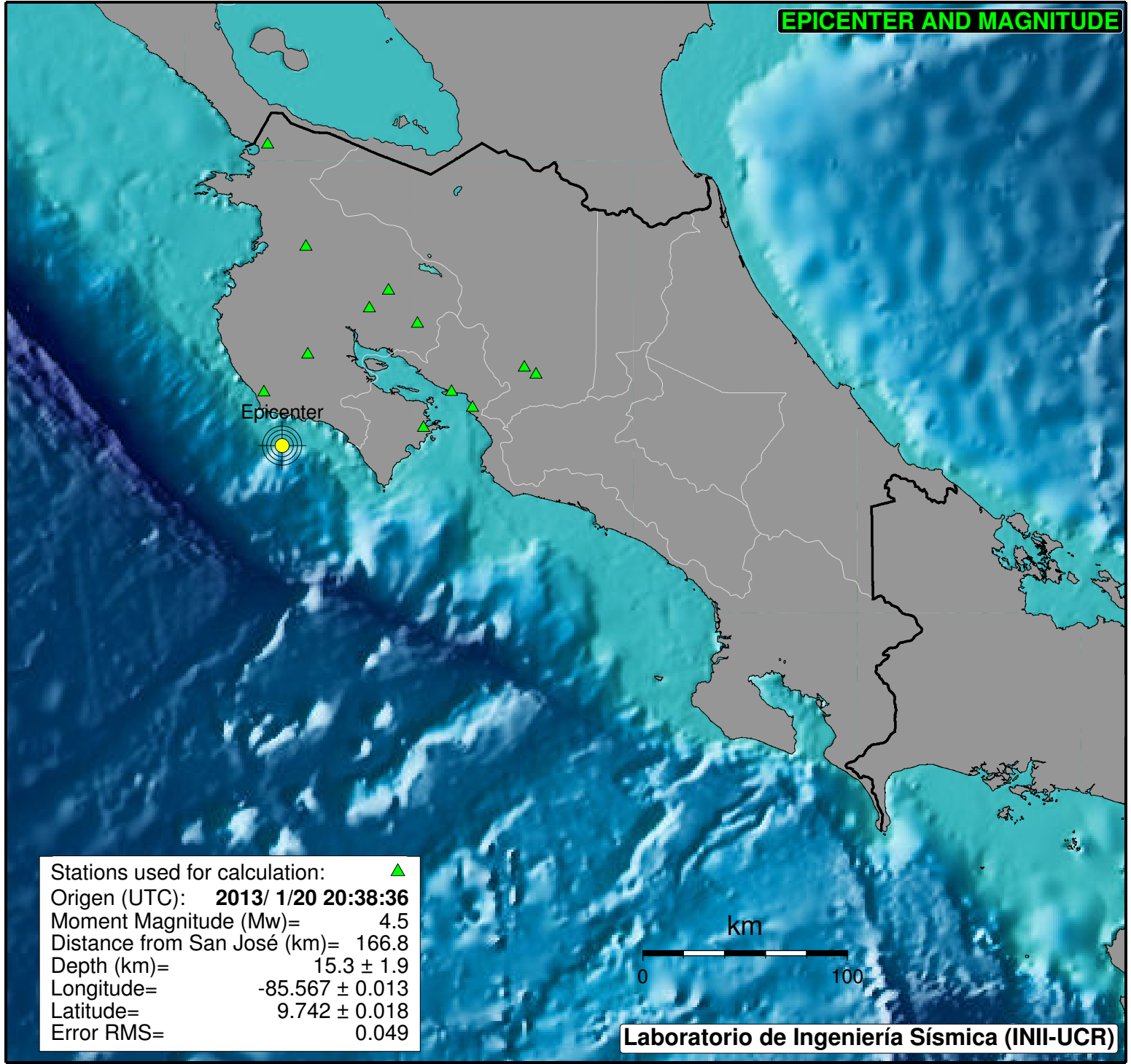
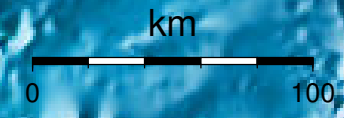


EPICENTER AND MAGNITUDE



Stations used for calculation: ▲
Origen (UTC): **2013/ 1/20 20:38:36**
Moment Magnitude (Mw)= 4.5
Distance from San José (km)= 166.8
Depth (km)= 15.3 ± 1.9
Longitude= -85.567 ± 0.013
Latitude= 9.742 ± 0.018
Error RMS= 0.049



Laboratorio de Ingeniería Sísmica (INII-UCR)