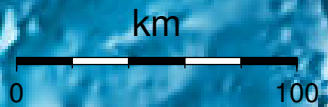


EPICENTER AND MAGNITUDE

Epicerter

Stations used for calculation: ▲
Origen (UTC): **2013/ 1/20 22: 1:28**
Moment Magnitude (Mw)= 4.4
Distance from San José (km)= 165.7
Depth (km)= 14.2 ± 1.8
Longitude= -85.561 ± 0.012
Latitude= 9.775 ± 0.016
Error RMS= 0.041



Laboratorio de Ingeniería Sísmica (INII-UCR)