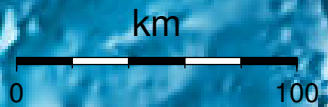


EPICENTER AND MAGNITUDE

Epicenter

Stations used for calculation: ▲
Origen (UTC): **2013/ 2/12 16:58: 1**
Moment Magnitude (Mw)= 3.5
Distance from San José (km)= 177.7
Depth (km)= 19.1 ± 1.2
Longitude= -85.680 ± 0.022
Latitude= 9.923 ± 0.026
Error RMS= 0.052



Laboratorio de Ingeniería Sísmica (INII-UCR)