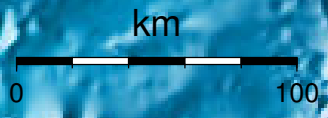


EPICENTER AND MAGNITUDE

Epicenter

Stations used for calculation: ▲
Origen (UTC): **2013/ 2/12 17: 4:48**
Moment Magnitude (Mw)= 3.5
Distance from San José (km)= 177.1
Depth (km)= 19.8 ± 1.4
Longitude= -85.674 ± 0.023
Latitude= 9.940 ± 0.024
Error RMS= 0.046



Laboratorio de Ingeniería Sísmica (INII-UCR)