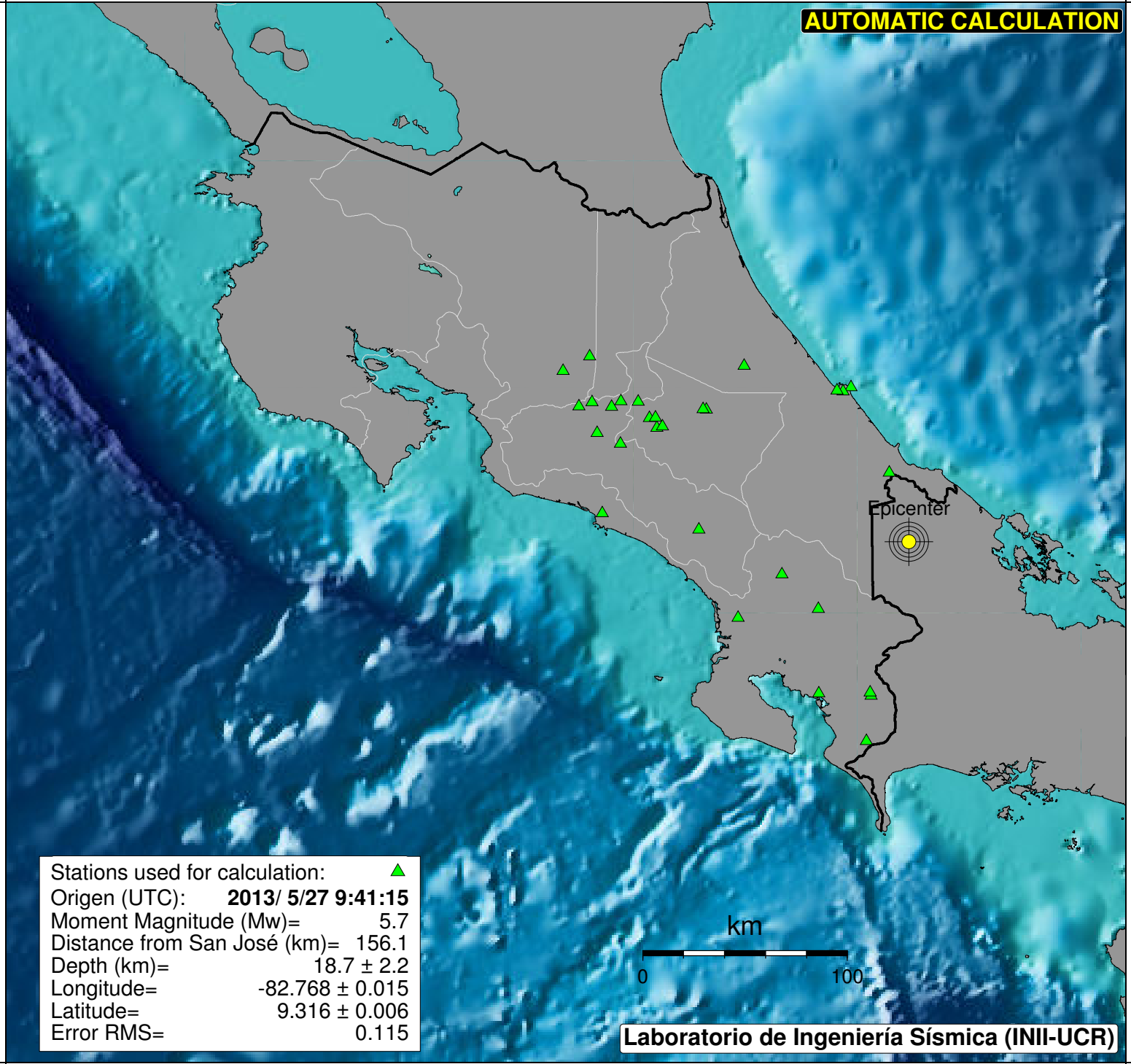
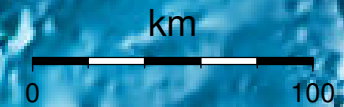


AUTOMATIC CALCULATION



Stations used for calculation: ▲
Origen (UTC): **2013/ 5/27 9:41:15**
Moment Magnitude (Mw)= 5.7
Distance from San José (km)= 156.1
Depth (km)= 18.7 ± 2.2
Longitude= -82.768 ± 0.015
Latitude= 9.316 ± 0.006
Error RMS= 0.115



Laboratorio de Ingeniería Sísmica (INII-UCR)