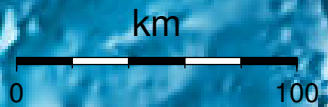


EPICENTER AND MAGNITUDE

Epicenter

Stations used for calculation: ▲
Origen (UTC): **2013/ 6/23 20: 0:36**
Moment Magnitude (Mw)= 5.6
Distance from San José (km)= 173.5
Depth (km)= 16.0 ± 1.1
Longitude= -85.641 ± 0.016
Latitude= 9.964 ± 0.011
Error RMS= 0.065



Laboratorio de Ingeniería Sísmica (INII-UCR)