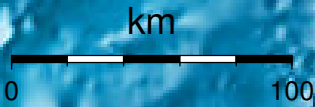


**EPICENTER AND MAGNITUDE**

Epicenter

Stations used for calculation: ▲  
Origen (UTC): **2013/ 9/ 5 18:31:30**  
Moment Magnitude (Mw)= 3.6  
Distance from San José (km)= 174.6  
Depth (km)=  $14.1 \pm 2.0$   
Longitude=  $-85.651 \pm 0.013$   
Latitude=  $9.967 \pm 0.019$   
Error RMS= 0.035



**Laboratorio de Ingeniería Sísmica (INII-UCR)**