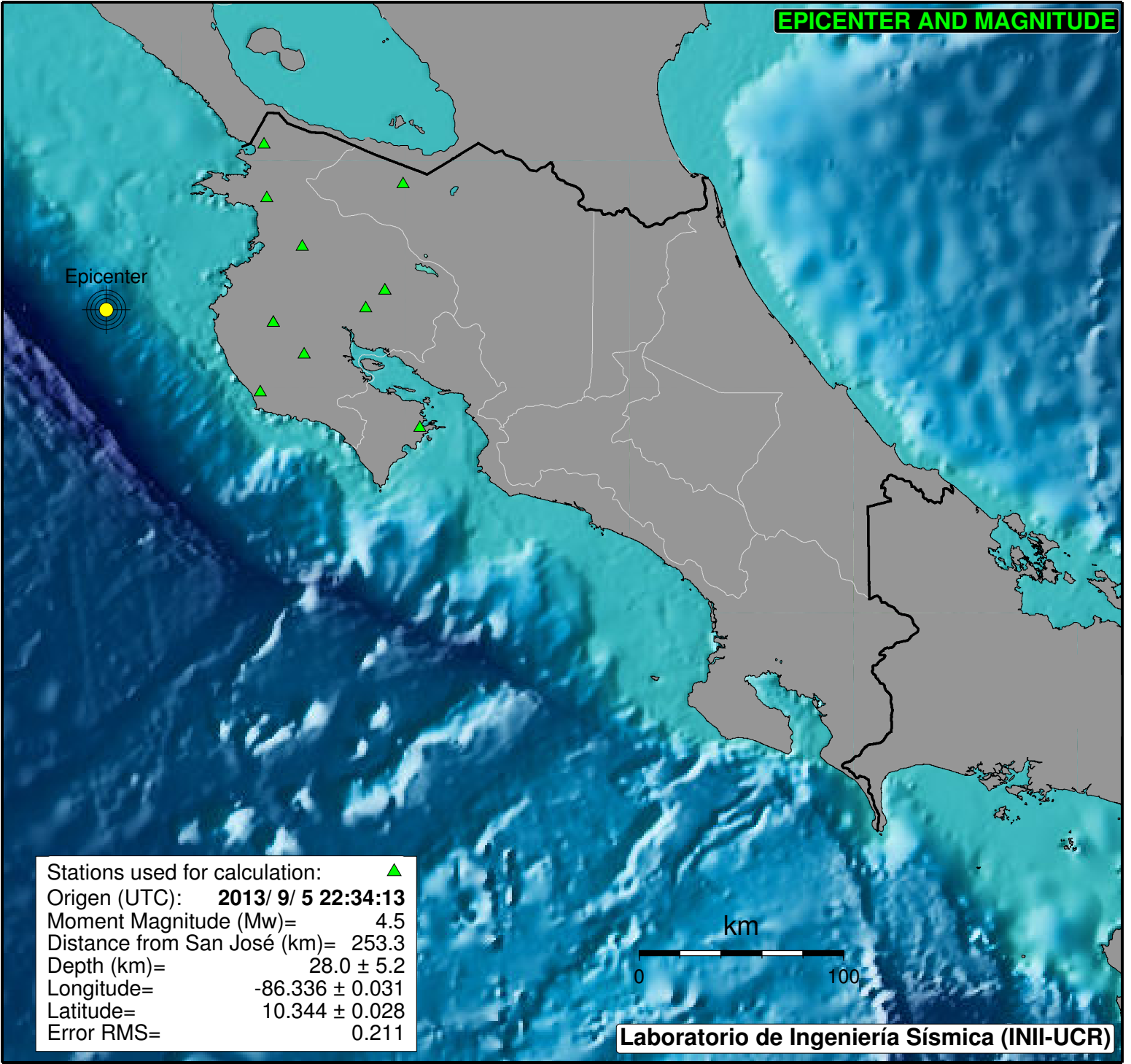
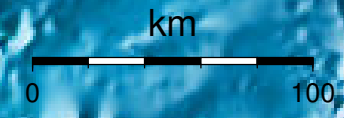


EPICENTER AND MAGNITUDE



Stations used for calculation: ▲
Origen (UTC): **2013/ 9/ 5 22:34:13**
Moment Magnitude (Mw)= 4.5
Distance from San José (km)= 253.3
Depth (km)= 28.0 ± 5.2
Longitude= -86.336 ± 0.031
Latitude= 10.344 ± 0.028
Error RMS= 0.211



Laboratorio de Ingeniería Sísmica (INII-UCR)