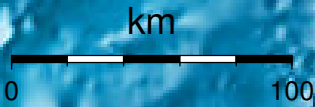


EPICENTER AND MAGNITUDE

Epicenter

Stations used for calculation: ▲
Origen (UTC): **2014/02/07 08:25:23**
Moment Magnitude (Mw)= 3.3
Distance from San José (km)= 175.9
Depth (km)= 14.2 ± 0.813
Longitude= -85.656 ± 0.002
Latitude= 10.094 ± 0.000
Error RMS= 0.019



Laboratorio de Ingeniería Sísmica (INII-UCR)