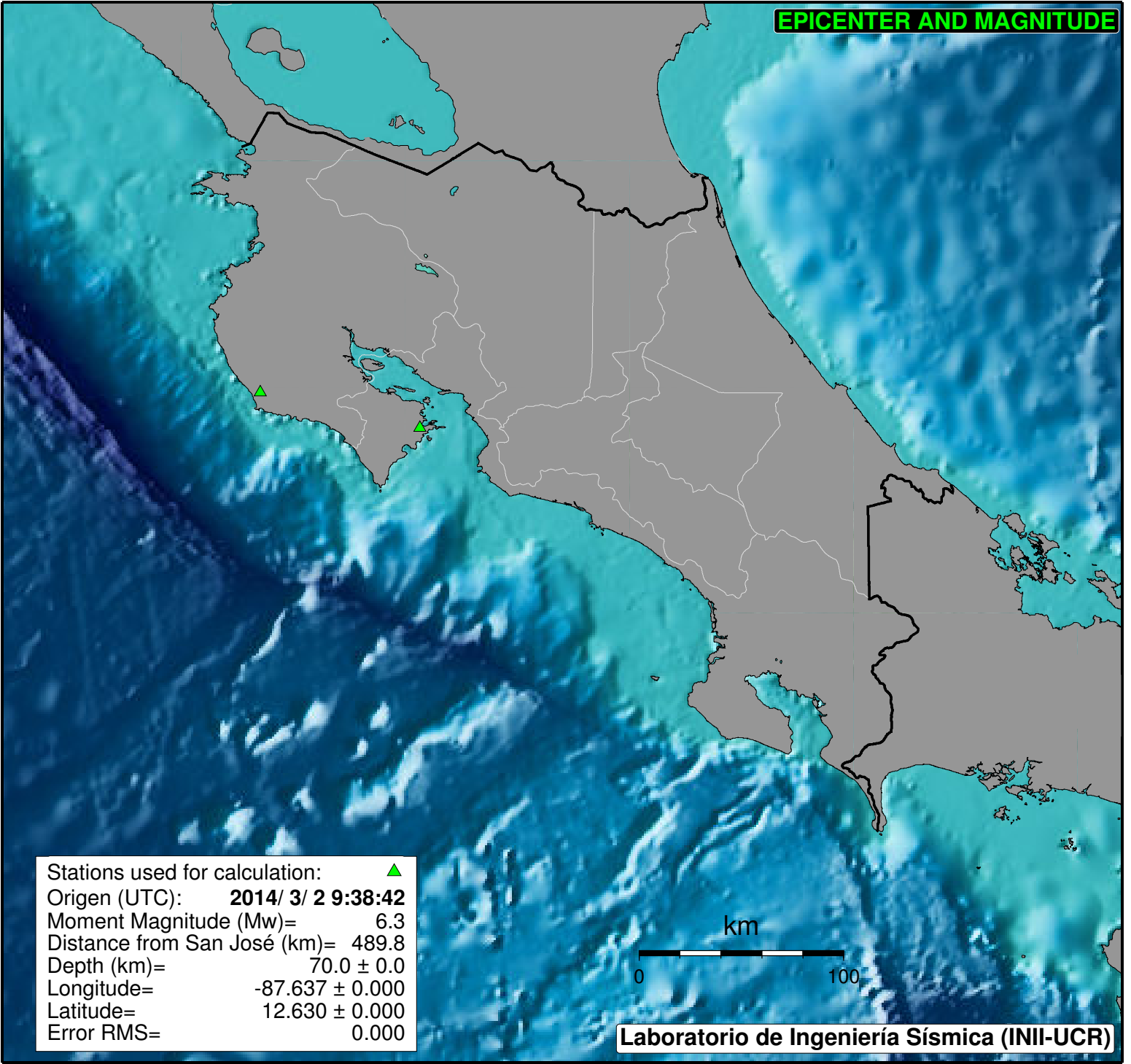
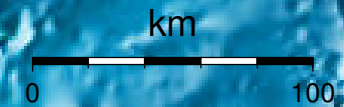


**EPICENTER AND MAGNITUDE**



Stations used for calculation: ▲  
Origen (UTC): **2014/ 3/ 2 9:38:42**  
Moment Magnitude (Mw)= 6.3  
Distance from San José (km)= 489.8  
Depth (km)= 70.0 ± 0.0  
Longitude= -87.637 ± 0.000  
Latitude= 12.630 ± 0.000  
Error RMS= 0.000



**Laboratorio de Ingeniería Sísmica (INII-UCR)**