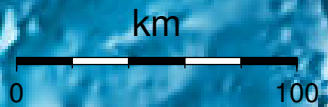


EPICENTER AND MAGNITUDE

Epicenter

Stations used for calculation: ▲
Origen (UTC): **2014/03/05 21:15:50**
Moment Magnitude (Mw)= 4.9
Distance from San José (km)= 170.7
Depth (km)= 12.7 ± 2.321
Longitude= -85.615 ± 0.013
Latitude= 9.877 ± 0.004
Error RMS= 0.113



Laboratorio de Ingeniería Sísmica (INII-UCR)