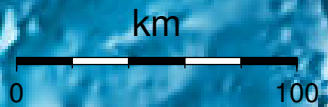


**EPICENTER AND MAGNITUDE**

Epicenter

Stations used for calculation: ▲  
Origen (UTC): **2014/05/08 23:20:14**  
Moment Magnitude (Mw)= 3.6  
Distance from San José (km)= 176.4  
Depth (km)=  $16.1 \pm 0.791$   
Longitude=  $-85.668 \pm 0.001$   
Latitude=  $9.957 \pm 0.008$   
Error RMS= 0.079



**Laboratorio de Ingeniería Sísmica (INII-UCR)**