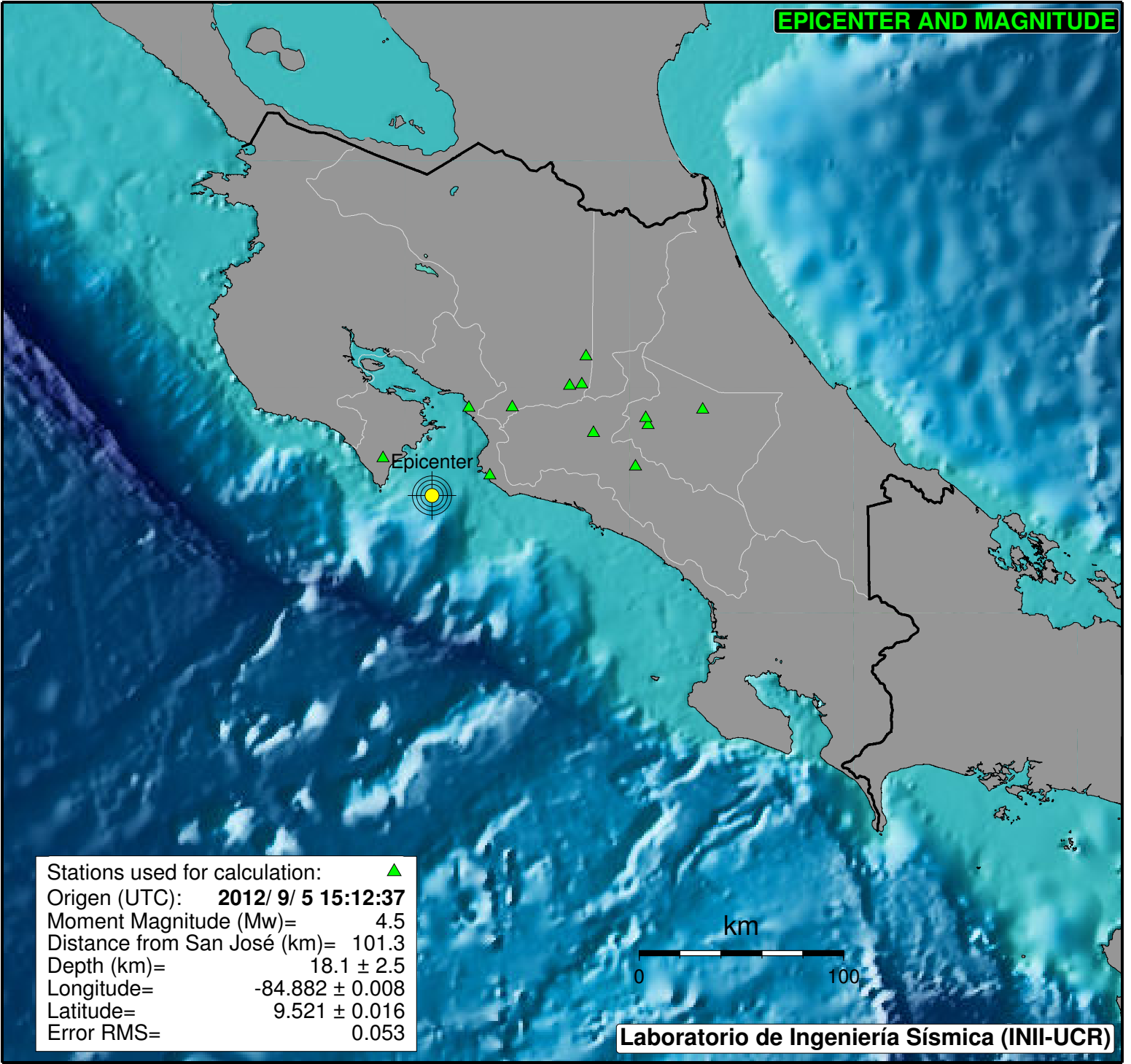
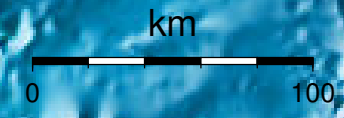


EPICENTER AND MAGNITUDE



Stations used for calculation: ▲
Origen (UTC): **2012/ 9/ 5 15:12:37**
Moment Magnitude (Mw)= 4.5
Distance from San José (km)= 101.3
Depth (km)= 18.1 ± 2.5
Longitude= -84.882 ± 0.008
Latitude= 9.521 ± 0.016
Error RMS= 0.053



Laboratorio de Ingeniería Sísmica (INII-UCR)